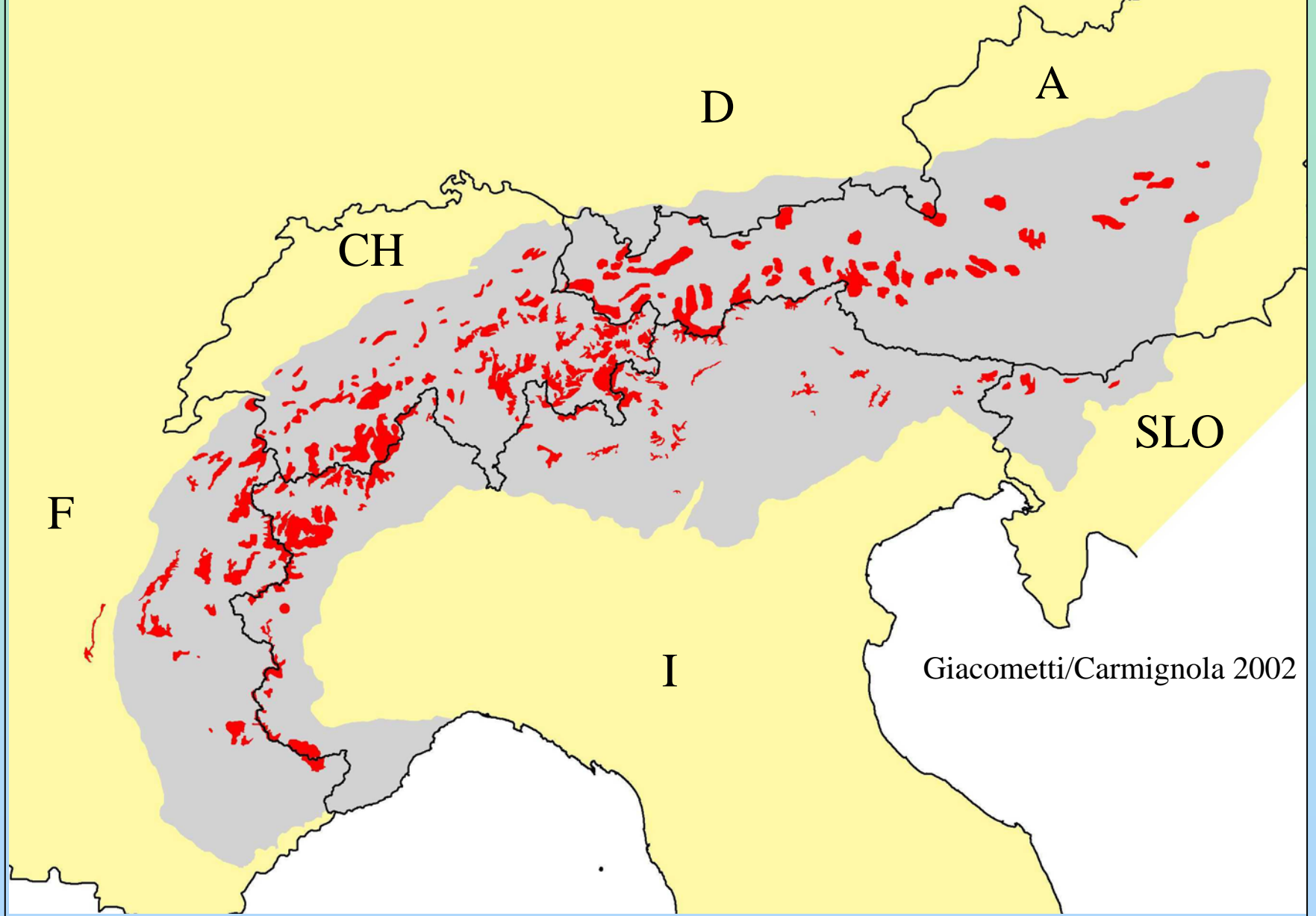




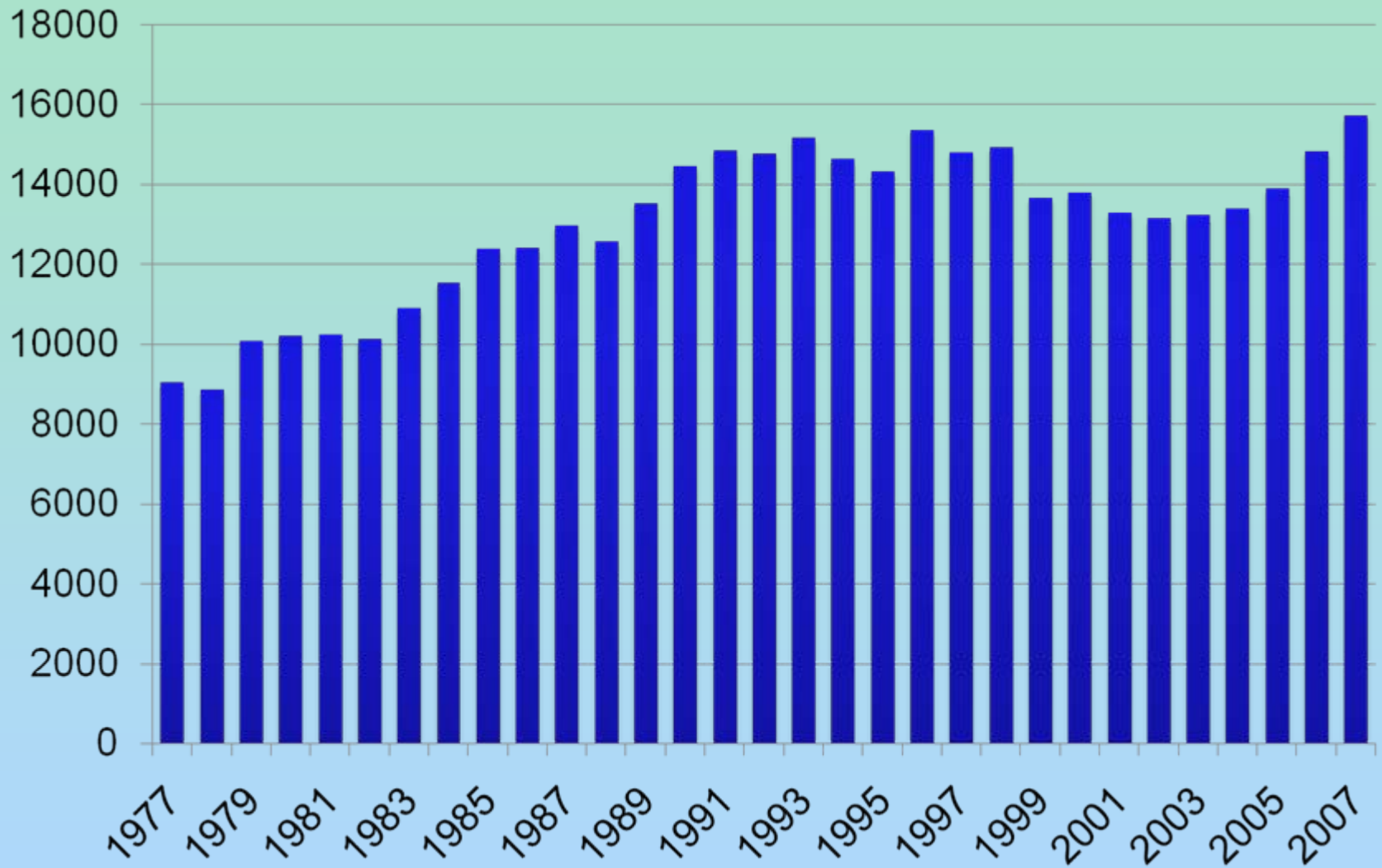
Alpine ibex in Switzerland in 1977 – 2007: a comment on population development and on the national research project

Marco Giacometti, Wildvet Projects



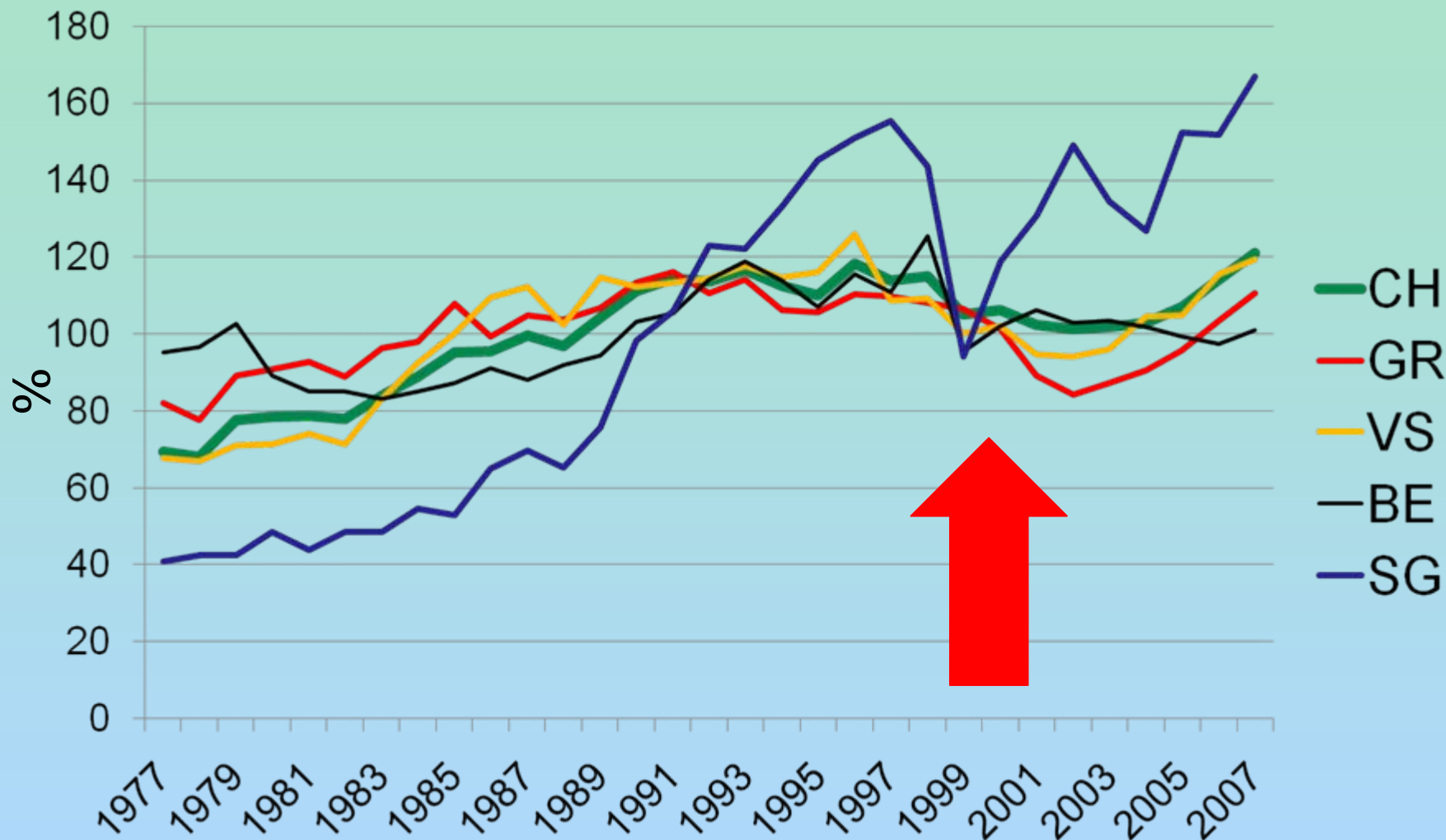
Distribution of Alpine ibex in Switzerland

Data: Swiss Federal Office for the Environment, Bern



Population of Alpine ibex in Switzerland 1977 – 2007
(absolute numbers)

Data: Swiss Federal Office for the Environment, Bern



Population of Alpine ibex in 4 Swiss Cantons and in Switzerland 1977 – 2007 (percent of mean values)

Reasons for population decline in Switzerland?
Poaching?



Reasons for
population decline
in Switzerland?

Hunting?



Reasons for population decline in Switzerland?

Federal Office for the Environment (2003):

- Mysterious diseases? Abortions?
- Inbreeding?
- Climate change?
- Other reasons?

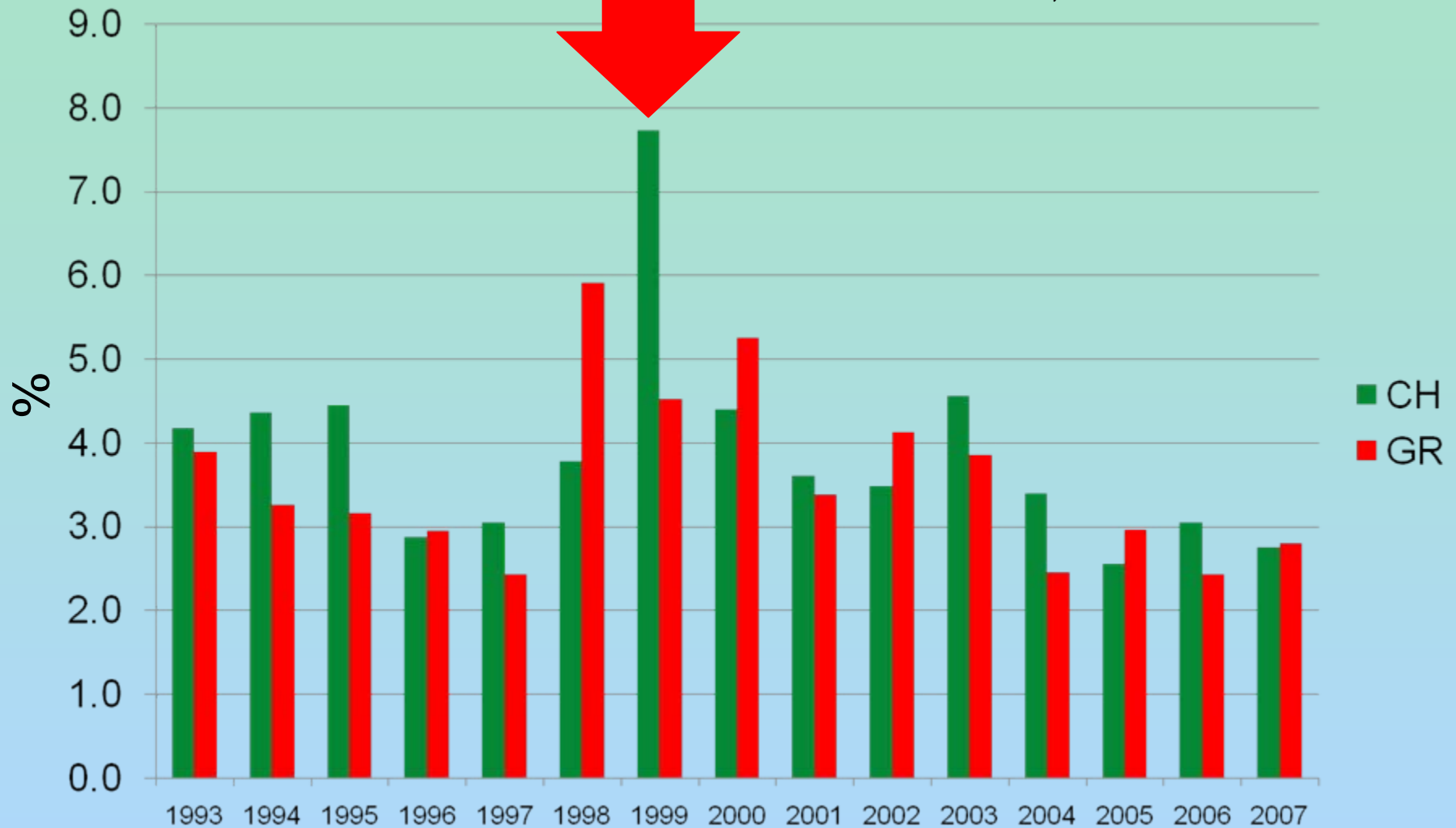
2004 - 2010: National research project on ibex
lead: international professors
But: no study on environment is ongoing!

If ibex die, there
must be
carcasses
around!

Number of
perished ibex
recorded?

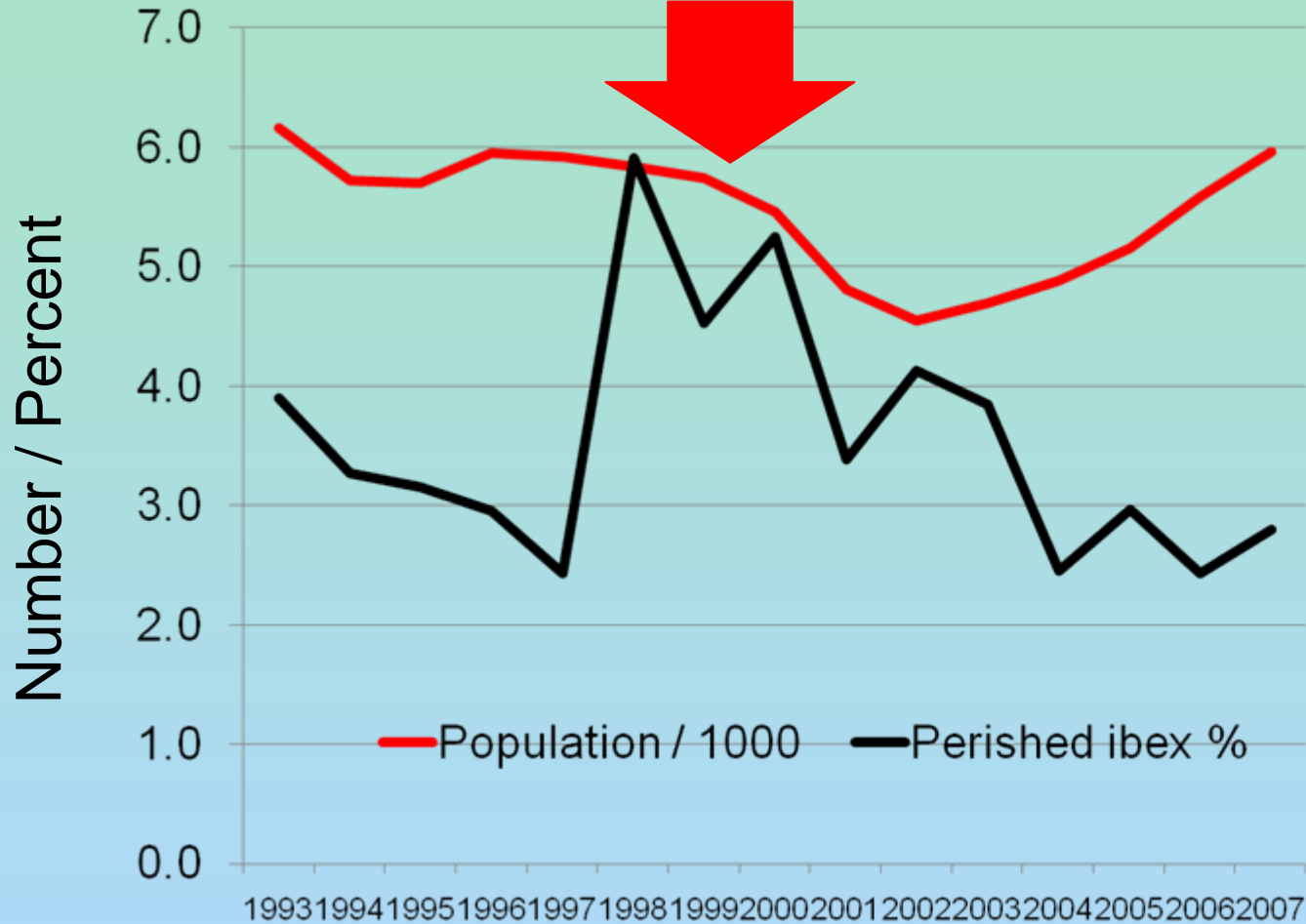


Data: Swiss Federal Office for the Environment, Bern

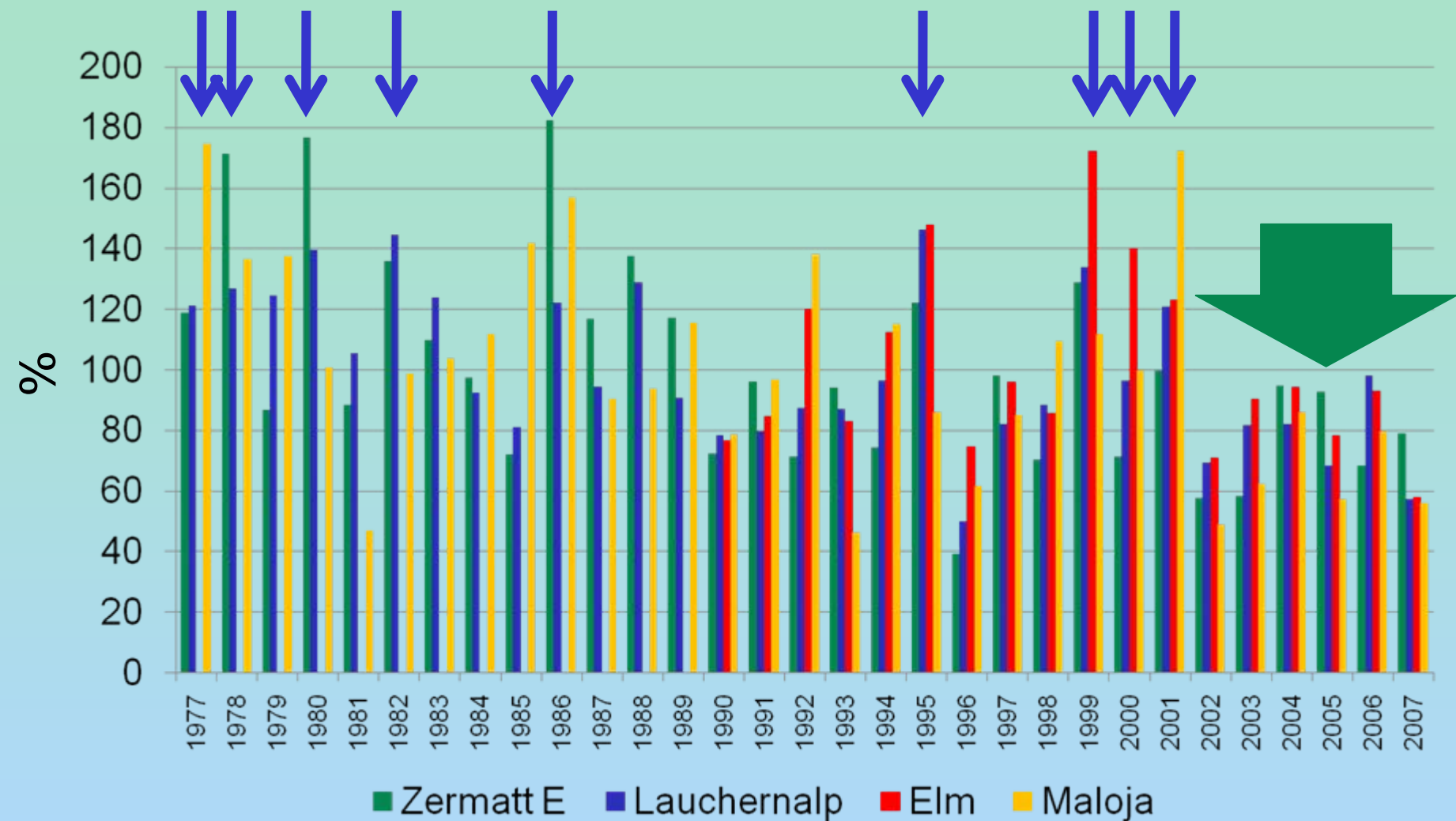


Perished Alpine ibex in Grisons and in Switzerland
1993 – 2007 (percent of population number)

Data: Swiss Federal Office for the Environment, Bern

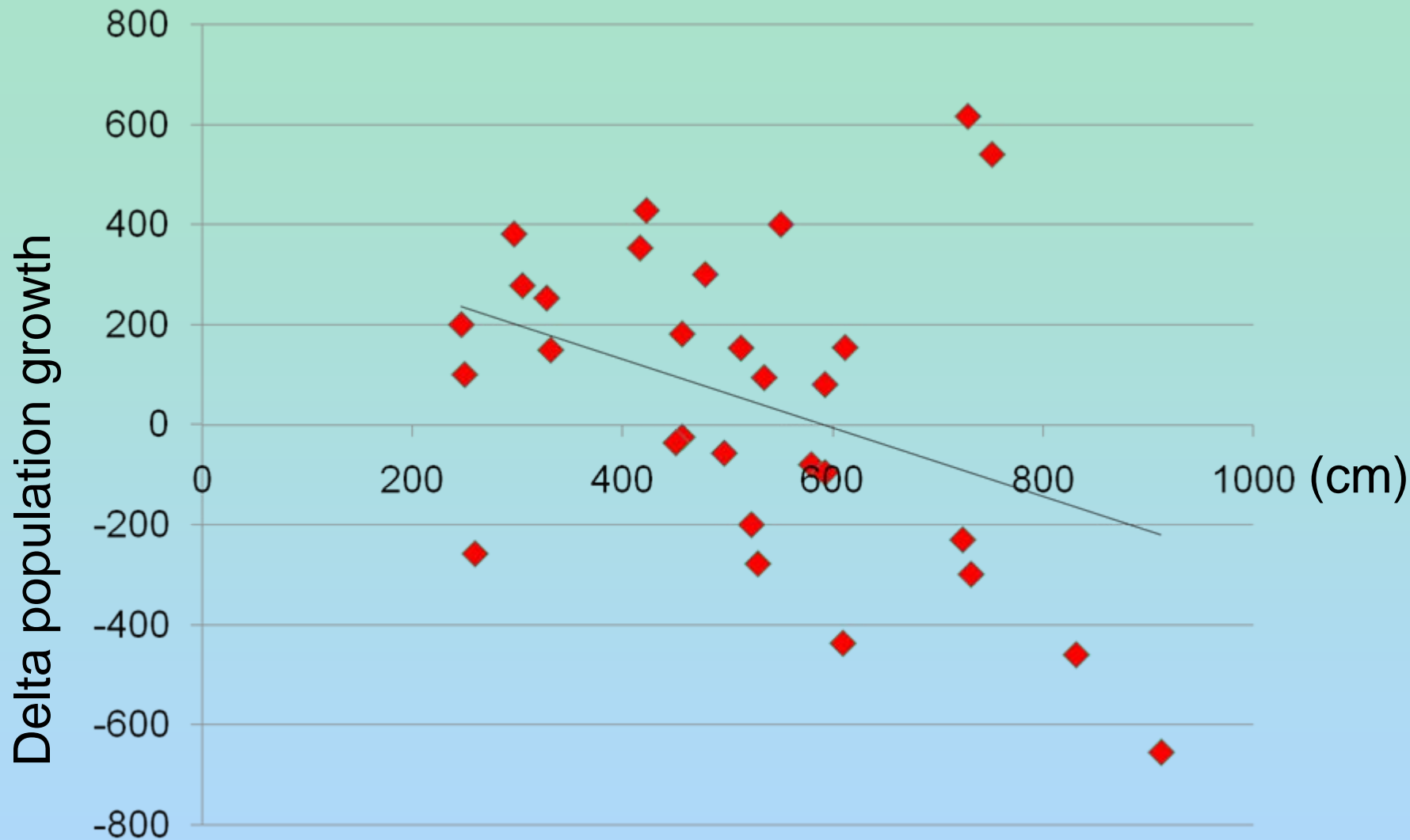


Population (/1000) and perished Alpine ibex (percent of population number) in Grisons 1993 – 2007



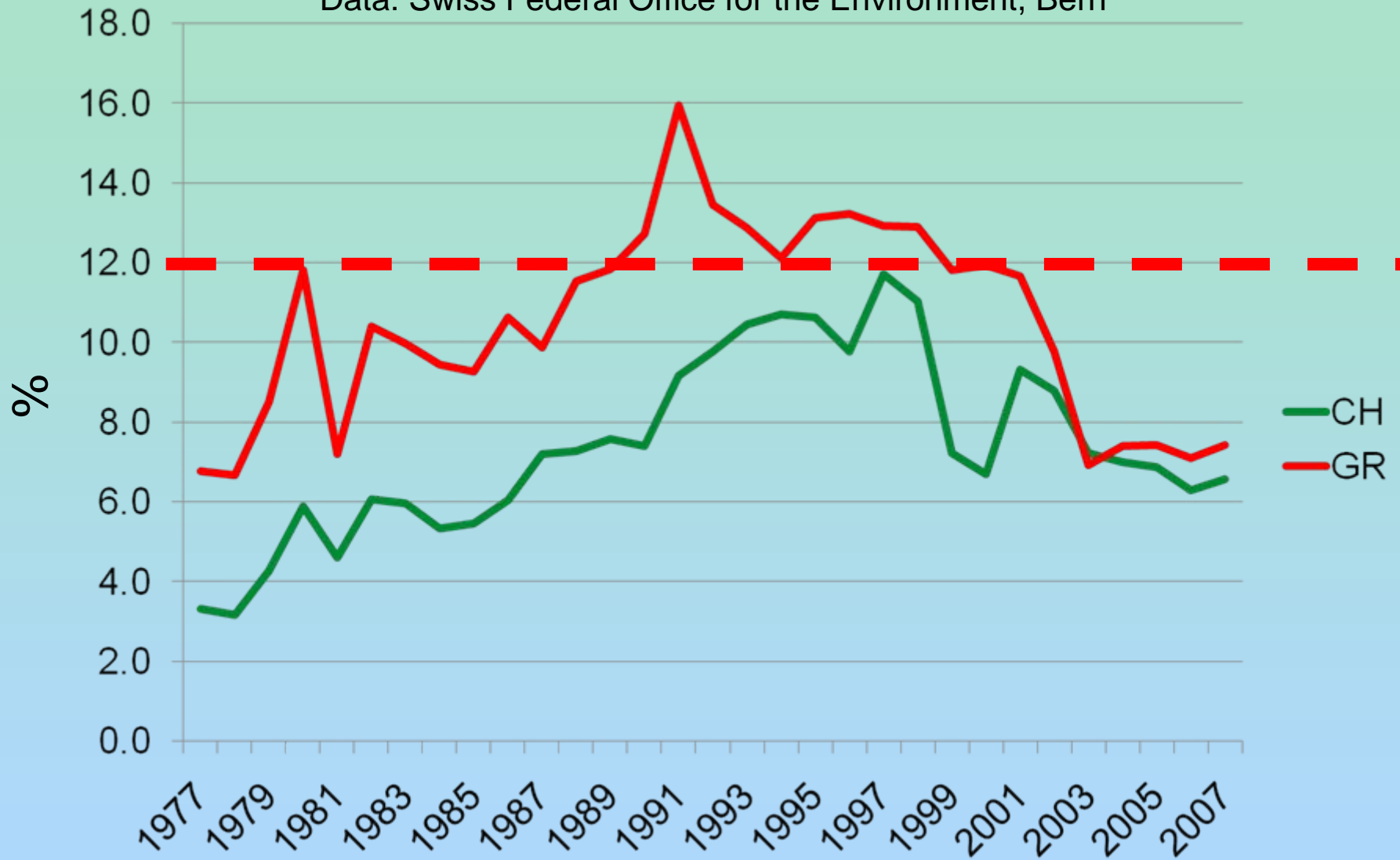
Data: Swiss Institute for Snow and Avalanche Research, Davos

Total snowfall in 4 stations in the Swiss Alps
(percent of the mean value) 1977 – 2007



Total snowfall in Maloja (1815 m, in cm) and delta population growth in Grisons 1977 – 2007

Data: Swiss Federal Office for the Environment, Bern



Alpine ibex hunted in Grisons and in Switzerland
1993 – 2007 (percent)

Preliminary results

(to be validated by international professors)

Population declines if perished ibex $> 4\%$

Decline of ibex numbers in saturated populations occurs if total snowfall is high

Recover of ibex population after 2003 because of low snowfall in ALL years

Hunting quota $< 12\%$ does not reduce ibex population below habitat carrying capacity